

373.2.016

13.00.08 -

)
Auef

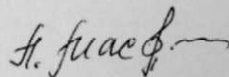
-2008

Захист відбудеться 27 січня 2009 р. о 14-00 годині на засіданні спеціалізованої вченої ради Д 26.454.01 в Інституті проблем виховання АПН України за адресою: 04060, м. Київ, вул. М. Берлінського, 9, 8-й поверх, зал засідань.

З дисертацією можна буде ознайомитися в науковій частині Інституту проблем виховання АПН України (04060, м. Київ, вул. М. Берлінського, 9).

Автореферат розісланий 25 з грудня 2008 р.

Вчений секретар
спеціалізованої вченої ради



Л. М. Масол

(. . .) .

"

(9 23.11.2004 p.).

5-6-

1.

2.

3.

5-6-

4.

5.

(. . . , . . .) ;

1. ,) ;

(. . . , . . . , . . . , . . .) ;

(. . . , . . .) ;

(. . . , . . .) .

2003-2006 p.p.

17, 12,

8 1 "
200 5-6 - , 75 , 230

5-6-

1. ...
 2. ...
 3. ...
 4. ...
 5. ...
 6. ...
 7. ...
 8. ...
 9. ...
 10. ...
 11. ...
 12. ...
 13. ...
 14. ...
 15. ...
 16. ...
 17. ...
 18. ...
 19. ...
 20. ...
 21. ...
 22. ...
 23. ...
 24. ...
 25. ...
 26. ...
 27. ...
 28. ...
 29. ...
 30. ...
 31. ...
 32. ...
 33. ...
 34. ...
 35. ...
 36. ...
 37. ...
 38. ...
 39. ...
 40. ...
 41. ...
 42. ...
 43. ...
 44. ...
 45. ...
 46. ...
 47. ...
 48. ...
 49. ...
 50. ...
 51. ...
 52. ...
 53. ...
 54. ...
 55. ...
 56. ...
 57. ...
 58. ...
 59. ...
 60. ...
 61. ...
 62. ...
 63. ...
 64. ...
 65. ...
 66. ...
 67. ...
 68. ...
 69. ...
 70. ...
 71. ...
 72. ...
 73. ...
 74. ...
 75. ...
 76. ...
 77. ...
 78. ...
 79. ...
 80. ...
 81. ...
 82. ...
 83. ...
 84. ...
 85. ...
 86. ...
 87. ...
 88. ...
 89. ...
 90. ...
 91. ...
 92. ...
 93. ...
 94. ...
 95. ...
 96. ...
 97. ...
 98. ...
 99. ...
 100. ...

1. ...
 2. ...
 3. ...
 4. ...
 5. ...
 6. ...
 7. ...
 8. ...
 9. ...
 10. ...
 11. ...
 12. ...
 13. ...
 14. ...
 15. ...
 16. ...
 17. ...
 18. ...
 19. ...
 20. ...
 21. ...
 22. ...
 23. ...
 24. ...
 25. ...
 26. ...
 27. ...
 28. ...
 29. ...
 30. ...
 31. ...
 32. ...
 33. ...
 34. ...
 35. ...
 36. ...
 37. ...
 38. ...
 39. ...
 40. ...
 41. ...
 42. ...
 43. ...
 44. ...
 45. ...
 46. ...
 47. ...
 48. ...
 49. ...
 50. ...
 51. ...
 52. ...
 53. ...
 54. ...
 55. ...
 56. ...
 57. ...
 58. ...
 59. ...
 60. ...
 61. ...
 62. ...
 63. ...
 64. ...
 65. ...
 66. ...
 67. ...
 68. ...
 69. ...
 70. ...
 71. ...
 72. ...
 73. ...
 74. ...
 75. ...
 76. ...
 77. ...
 78. ...
 79. ...
 80. ...
 81. ...
 82. ...
 83. ...
 84. ...
 85. ...
 86. ...
 87. ...
 88. ...
 89. ...
 90. ...
 91. ...
 92. ...
 93. ...
 94. ...
 95. ...
 96. ...
 97. ...
 98. ...
 99. ...
 100. ...

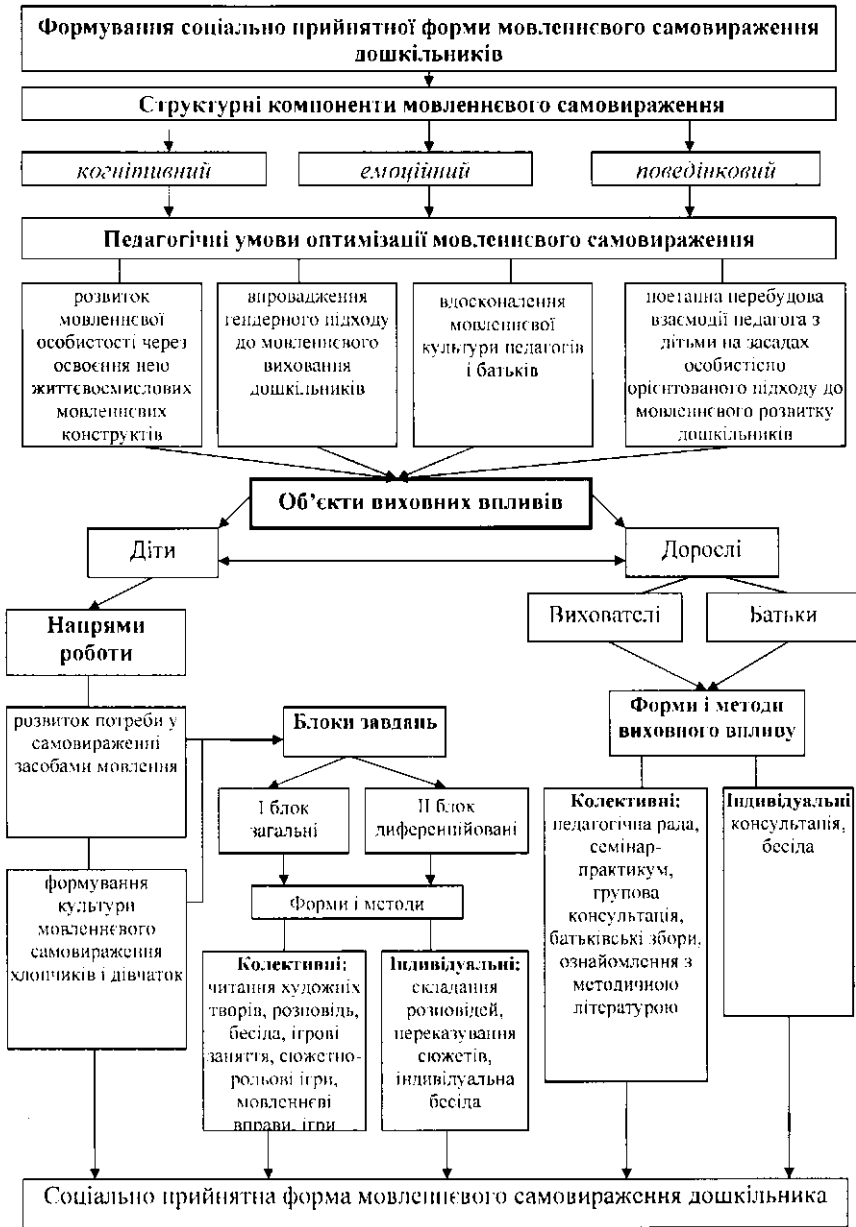


Рис. 1. Модель оптимізації мовленнєвого самовираження дошкільників.

1.

I

		%											
		10	12	2	5	8	7	36	16	15	6	21	10
		33	38	13	14	20	24	29	40	11	16	18	24
		37	32	23	20	14	12	27	30	19	20	8	10
		20	18	12	10	8	8	8	14	6	10	2	4

26 %)

; 4 %, 10% - , 12% - (4 % 2 %), (2 % 4 %).

30 % -

, 8 % 27 % 14 %

(21% , 15%), (18% , 11%), (19% , 8%) (6% , 2 %)

(62 %)

30 %

$$\chi^2 = \sum_{k=1}^n \frac{(V_k - P_k)^2}{P_k}$$

41,02.

= 41,02 , = 11,34 0,01. > := 41,02 >

11,34,

1.

2.

3.

4.

8%), - 37% (23% , 14%), - 20% (12% , 8%). 10% (2% , 20%)

5.

(

6.

).

7.

8.

14 %.

1.

2.

3.

12 %
40 %,

32%

38 %.
30%

10% 36%.
33 % 29 %;
- 20 % 8 %.

16 % (

- 18%

(

(

- 2004. - 4. - . 62-65.

/

//

4. ... 2005. - 8. - 2. - 204-207.
 / //

. - 2006. - 4. -
 30-34.
 5. / //

.. 2006. - 9. - 261-270.
 6. / //

. - 2007. - 1. -
 36-39.
 7. / //

- 2007. - 4. - 74-76.
 8. / // . - 2008. -

7/8 (42/43). - 144-148.
 9. / // . - 2008. - 10. -

3-5.
 10. A.M. / //
 , 2007. - 3-5.

13.00.08 - , 2008.

" " " " " "

13.00.08 - , 2008.

(,).

10% 36%,
 - 20 % 8 %.
 (33 % 29 %) (37 %
 27 %).

Anishchuk A.M. Pedagogical Conditions of Optimization of the Process of Speech Self-expression of Pre-school Age Children of Different Sexes. - Handwriting.

Age Children applying for a Degree of Candidate of Pedagogical Sciences in speciality 13.00.08 - Pre - school Pedagogics.-Institute of Problems of Education of Ukrainian APS. - Kyiv, 2008.

The problem of speech self - expression of pre - school age children of different sexes was considered. The vitality of the defined problem was proved through substantiation of the new social demands to pre - school education.

The condition of the problem elaboration in the home and foreign science was revealed by the author; phenomenology of speech self - expression in pre - school age was substantiated; the components, criteria with their indicators/, typology of speech self - expression of pre - school age children were defined.

The complex model of teaching and educational process including methods and means of effective formation and development of pre - school age children's need in speech self - expression was substantiated. The complex of pedagogical conditions of optimization of this process in the conditions of communication was modeled. It was proved experimentally that the substantiated complex off

pedagogical conditions promoted the optimization of the process of speech self-expression of pre - school age children of different sexes.

Key words: complex of pedagogical conditions, optimization , the process of speech self - expression, pre - school age children of different sexes, personal self - expression, speech personality, speech culture, speech - activity, speech action, speech situation, speech behavior, speech construct, creative speech self - expression, emotional and value attitude.

22.12.08 p. 60x84/16.
 Computer Modern. . 0,9 120
 227



, 3/4
 2137 29.03.05
 8(04631)7-19-72
 E-mail: vidavn nduffmail.ru