



Зайдіть на сайт www.globe.gov та натисніть SIGN IN, щоб увійти до свого акаунту



New Data Entry Challenge

GLOBE is hosting a new Data Entry Challenge from 11-17 October. The GLOBE Implementation Office will recognize the schools contributing the most data, so don't be left out.

[View GLOBE Around the World](#)

[About](#)

[Join](#)

[Get Trained](#)

[Do GLOBE](#)

[GLOBE Data](#)

[Community](#)

[News & Events](#)

[Support](#)

RECENT MEASUREMENTS



Canyon Weather, United States, Weatherbug, Measured on: 2015-09-24



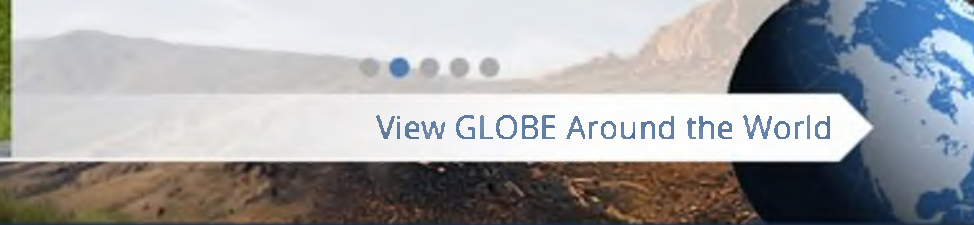
[Enter Data](#)

[Visualize Data](#)

Latest News and Events

NEWS EVENTS CLUBS USERS

GLOBE ON SOCIAL



View GLOBE Around the World

- About
- Join
- Get Trained
- Do GLOBE
- GLOBE Data
- Community
- News & Events
- Support



Email Address

natalipustilnik@gmail.com



Password

.....

Remember Me

Sign In

[Join GLOBE](#)

[Forgot Password](#)

Введіть свою електронну адресу та пароль

Якщо ви забули пароль, натисніть **Forgot Password** і на вашу електронну адресу буде надіслано листа з подальшими інструкціями

The GLOBE Program: Global Learning and Observations to Benefit the Environment



NASA Official: Ming-Ying Wei
GLOBE Implementation Office Director: Tony Murphy
Site Curator: Nargess Memarsadeghi



[Privacy Policy](#) | [Contact GLOBE](#)



Натисніть кнопку Go to і у вас випадє список установ до яких ви належите. Серед них має бути і ваша освітня установа. Щоб перейти на її сторінку, виберіть її назву зі списку. В даному випадку це National Ecology and Nature Center



Featured

GLOBE Ukraine Successfully Hosts Student Phenology Campaign

In 2015, GLOBE Ukraine held a Student Phenology Campaign called "Cherry Ukraine." Overall, 686 students and 89 teachers from 70 schools and educational institutions from all over Ukraine participated.

[View GLOBE Around the World](#)

RECENT MEASUREMENTS

Conrad Weiser Middle School (GLIDPYZA), United States, Weatherbug, Measured on: 2015-08-10

[Enter Data](#)
[Visualize Data](#)

Latest News and Events



Featured

New Data Entry Challenge

GLOBE is hosting a new Data Entry Challenge from 11-17 October. The GLOBE Implementation Office will recognize the schools contributing the most data, so don't be left out.



- My Page
- Visualize and Retrieve Data
- GLOBE Implementation Office
- Europe and Eurasia
- Ukraine
- National Ecology and Nature Center**
- Community Feedback Forum
- Elementary GLOBE
- GLOBE International Scientist Network
- GLOBE.gov
- Partners and CC Community
- Student Climate Research Campaign

[View GLOBE Around the World](#)

[About](#)

[Join](#)

[Get Trained](#)

[Do GLOBE](#)

[GLOBE Data](#)

[Community](#)

[News & Events](#)

[Support](#)

RECENT MEASUREMENTS



Conrad Weiser Middle School (GLIDPYZA), United States, Weatherbug, Measured on: 2015-09-:



[Enter Data](#)

[Visualize Data](#)





About

Join

Get Trained

Do GLOBE

GLOBE Data

Community

News & Events

Support

Home > Community > National Ecology and Nature Center > Overview



Перейдіть на вкладку Image Gallery. Це спеціальна сторінка, де ви можете розміщувати цікаві фотографії

Overview

Contact Info

Highlights

Resources



National Ecology and Nature Center

Year Joined:

Number of Students: 44

Grade Levels: Primary: K-6, Secondary: 7-12

School Type: Public

All GLOBE teachers in Ukraine are invited to participate and discuss important events and documents.

Date Modified: 01/04/2013

Highlights

No Current Highlights Available

School Location

Organization Measurements and Accomplishments

Participation

3 Teachers	1 School
0 Pre-Service Teachers	44 Students
2,360 Data Entries	0 Honor Rolls

Most Used

- Protocols:
- Biosphere
 - Land Cover Classification



Home > Community > National Ecology and Nature Center > Image Gallery

[Overview](#)
[Contact Info](#)
[Highlights](#)
[Image Gallery](#)
[Resources](#)

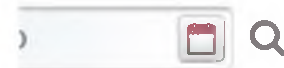


National Ecology and Nature Center

Year Joined:
 Number of Students: 44
 Grade Levels: Primary: K-6, Secondary: 7-12
 School Type: Public

Image Gallery

Майже готово! Натисніть іконку гаєчного ключа біля Gallery Home



Gallery Home





Home > Community > National Ecology and Nature Center > Image Gallery

[Overview](#)
[Contact Info](#)
[Highlights](#)
[Image Gallery](#)
[Resources](#)



National Ecology and Nature Center

Year joined:
 Number of Students: 44
 Grade Levels: Primary: K-6, Secondary: 7-12
 School Type: Public

Add Folder
 Add Image

Gallery Home



... та натисніть Add Image

Search Images: From To





Home > Community > National Ecology and Nature Center > Image Gallery

[Overview](#)
[Contact Info](#)
[Highlights](#)
[Image Gallery](#)
[Resources](#)



National Ecology and Nature Center

Year joined:
 Number of Students: 44
 Grade Levels: Primary: K-6, Secondary: 7-12
 School Type: Public



New Image

[« Back](#)

⚠ It is your responsibility to ensure that any uploaded image is copyright-free, and that you have a signed photo release form for everyone in the image. Everyone under the age of 18 must have this form ([English](#) | [Spanish](#)) signed by a parent or guardian.

Browse (you can select multiple files).

Use the classic uploader.

Натисніть Browse щоб вибрати фото з комп'ютера. Примітка: ви можете завантажити одразу декілька файлів натиснувши та утримуючи клавішу Ctrl

Home > Community > National Ecology and Nature Center > Image Gallery

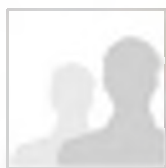
Overview

Contact Info

Highlights

Image Gallery

Resources



National Ecology and Nature Center

Year Joined:

Number of Students: 44

Grade Levels: Primary: K-6, Secondary: 7-12

School Type: Public

New Image

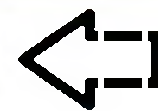
[« Back](#)

⚠ It is your responsibility to ensure that any uploaded image is copyright-free, and that you have a signed photo release form for everyone in the image. Everyone under the age of 18 must have this form ([English](#) | [Spanish](#)) signed by a parent or guardian.

📁 Browse (you can select multiple files).

Upload Files

✖ Cancel All Uploads



Натискуете Upload Files

1 files ready to be uploaded.

DSC07484.JPG

Cancel Upload

Use the classic uploader.



Home > Community > National Ecology and Nature Center > Image Gallery

Overview

Contact Info

Highlights

Image Gallery

Resources



National Ecology and Nature Center

Year joined:

Number of Students: 44

Grade Levels: Primary: K-6, Secondary: 7-12

School Type: Public

New Image

[« Back](#)

⚠ It is your responsibility to ensure that any uploaded image is copyright-free, and that you have a signed photo release form for everyone in the image. Everyone under the age of 18 must have this form ([English](#) | [Spanish](#)) signed by a parent or guardian.

Browse (you can select multiple files).

Clear Recent Uploads

All uploads complete.

DSC07484.JPG

Якщо все зроблено вірно, з'явиться повідомлення All uploads complete (Всі завантаження завершено)

Use the classic uploader.



National Ecology and Nature Center

Year Joined:
Number of Students: 44
Grade Levels: Primary: K-6, Secondary: 7-12
School Type: Public

Image Gallery

Search Images: From [calendar icon] To [calendar icon] [magnifying glass icon]

Gallery Home

Готово! Переглянути завантажені фотографії можна у вкладці Image Gallery. Успіхів!

